



# VARIECO

Specialist Refrigeration Equipment



*Versatile compact chilling system that can be configured to meet your customers needs.*



## 7.5

## 11

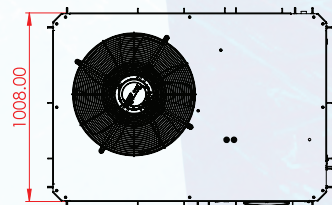
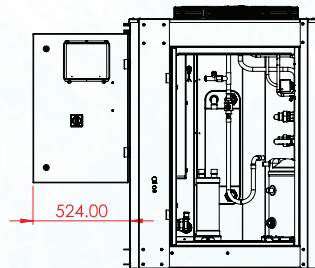
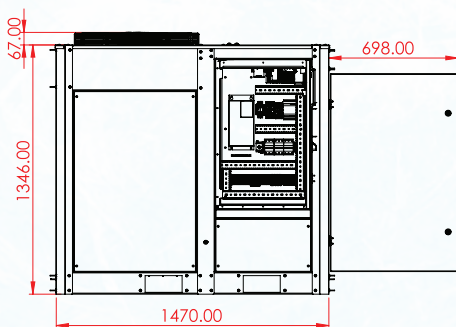
## 15

<b>Refrigerant</b>	R410A/R454B	R410A/R454B	R410A/R454B
<b>Mass of Refrigerant</b>	6 kg	6 kg	8.2 kg
<b>Number of Refrigerant Circuits</b>	1	1	1
<b>Compressor Type</b>	Variable Speed Scroll	Variable Speed Scroll	Variable Speed Scroll
<b>Cooling Capacity</b>	5.5 to 22 kW	7.5 to 31 kW	10.5 to 42 kW
<b>Max Cooling Capacity</b>	22 kW	31 kW	42 kW
<b>Energy Efficiency Rating</b>	3.4	3.4	3.4
<b>Product Outlet Temperature</b>	7.0°C	7.0°C	7.0°C
<b>Max. Fluid Flow Rate</b>	-	-	-
<b>Max. Air Inlet Temperature</b>	36°C	36°C	36°C
<b>Cooling Media Connection</b>	1 1/4" FBSP Stainless Steel	1 1/4" FBSP Stainless Steel	1 1/4" FBSP Stainless Steel
<b>Cold/Hot Water Connection</b>	1/2" FBSP Brass	1/2" FBSP Brass	1/2" FBSP Brass
<b>Electrical Supply</b>	415V/3ph 50 Hz	415V/3ph 50 Hz	415V/3ph 50 Hz
<b>Max. Nominal Current</b>	11.6 A	15.67 A	23.21 A
<b>Displacement Power Factor</b>	0.97	0.97	0.97
<b>Total Absorbed Power</b>	8.47 kW*	11.97 kW*	15.97 kW*
<b>Buffer Tank Capacity</b>	95 L	95 L	95 L
<b>Base Weight**</b>	-	-	-
<b>Dimension(L x W x H)</b>	1470 x 1008 x 1413 mm	1470 x 1008 x 1413 mm	1470 x 1008 x 1413 mm

\* Total Absorbed Power without Internal Pump installed

\*\* Total Weight of Basic Options (without Pump, Buffer Tank, De-Super Heater installed)

VARIECO 7.5 | 11 | 15



coolsense.co.nz

Cold, Calm AND Connected  
SNAP CHILLING | HEAT RECOVERY | ENERGY SAVING



# VARIECO

Specialist Refrigeration Equipment

Westpac Waikato Business Awards  
Innovation Winner

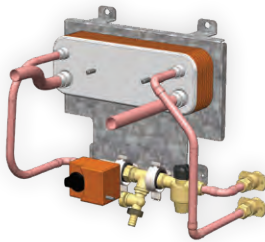
## PRODUCT CONFIGURATION SELECTION

MODEL	TANK	PUMP	HEAT RECOVERY	DISPLAY	REFRIGERANT	COOLCARE
-------	------	------	---------------	---------	-------------	----------

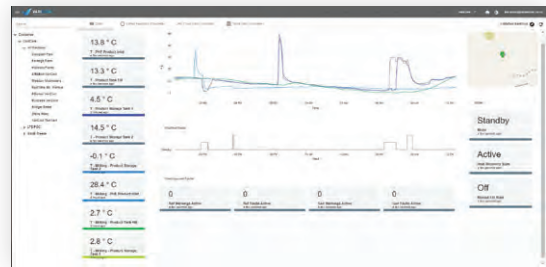
- VariECO 7.5
- VariECO 11
- VariECO 15



De-Super  
Heater  
Ref: HR



**COOLCARE**  
Telemetry and Diagnostics



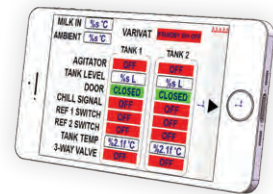
Buffer Tank 95L  
Ref: INT



HMI  
Ref: HMI



Wifi  
Ref: WF



Pump  
Ref: PMP



### CHILLER PUMP OPTIONS

VariECO 7.5	✓	✓	✗
VariECO 11	✓	✓	✓
VariECO 15	✗	✓	✓

### PUMP SPECIFICATIONS

Model Number	5HM05	10HM03	10HM04
kW	0.75	1.5	2.2
Amps	1.4	2.3	3.4
Flow Rate m3/hr	6	8.2	12
TDH in Kpa	350	350	350

R410A  
Ref: 410A

R454B  
Ref: 454B

